

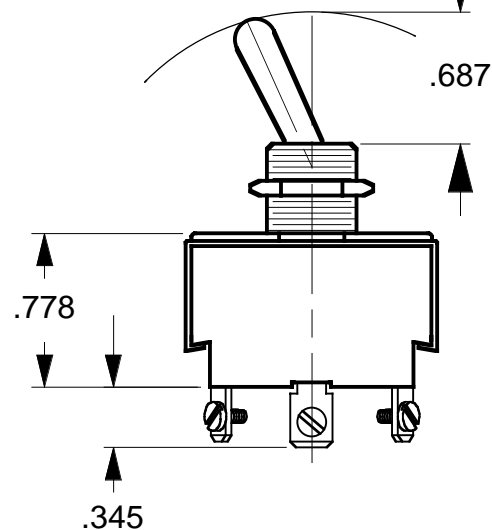
DO NOT SCALE DRAWING WORK TO FIGURE

DWG NO.		6GM5E-73	REV.
LET	REVISIONS	DATE	

POS 1

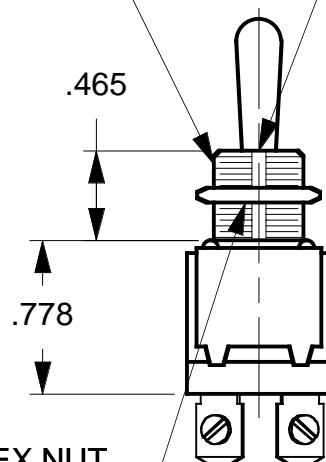
POS 2

POS 3



15/32-32NS-2  
THREAD

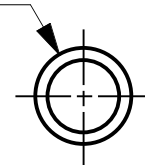
.072 WD X .038 DP  
KEYWAY



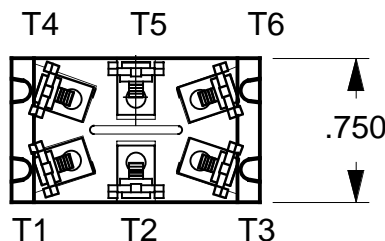
9/16 HEX NUT  
(FURN. ASSM.)

.562 DIA

.062



RING NUT  
(BULK)



**RATINGS:** UL, CSA  
10AMP 250VAC  
15AMP 125VAC  
3/4HP 125-250VAC

**OPERATES:**

POSITIONS OF TOGGLE

POS 1 ON	POS 2 OFF	POS 3 (ON)
2-3		1-2
5-6		4-5

**NOTES:**

- 1- KEYWAY INDICATES DOWN POSITION
- 2- TOGGLE, BUSHING, HEX & RING NUT ARE NICKEL PLATED BRASS

DIMENSIONS SUBJECT TO CHANGE WITHOUT NOTICE

FINISH

CARLINGSWITCH, INC.  
PLAINVILLE, CT

**PROPRIETARY NOTE:**

NOTICE TO ALL PERSONS RECEIVING THIS DRAWING. THIS DOCUMENT IS THE PROPERTY OF CARLINGSWITCH, INC. AND IS NOT TO BE DISCLOSED, REPRODUCED IN WHOLE OR IN PART OR USED FOR MANUFACTURING PURPOSES BY ANYONE WITHOUT THE CONSENT OF CARLINGSWITCH, INC.

UNSPECIFIED TOLERANCES

FRAC.  $\pm 1/64$  X.XXX  $\pm .015$   
ANGLES  $\pm 1^\circ$

PROJECTIONS



DIMENSIONS  
IN [mm]

TOOL NO.	REV
DR BY JHL	DATE 5-31-00
CHK BY	DATE
APPD BY	DATE

TITLE

G SERIES  
DOUBLE POLE

SIZE A	DWG NO. 6GM5E-73	REV.
USED ON	SCALE: NONE	SHT 1 OF 1